



BARLOW of BARLOW



Spring Issue - May 1999

A. Maxim Coppage (1915-1998), Founder

Edson L. Barlow, Editor

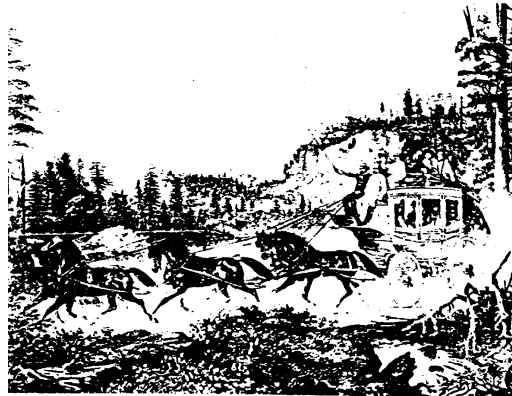
840 East Gunn Road, Rochester, Michigan 48306-1905
barlowpa@metronet.lib.mi.us or elbarlow@juno.com

Published quarterly in February, May, August and November. Queries are free and are welcome from all. Annual index included with the November issue. Subscriptions are \$10 annually for paper edition and \$5 annually for e-mail edition. Please send all editorial material, queries and subscription requests to Edson L. Barlow, 840 East Gunn Road, Rochester, Michigan 48306-1905.

Bradley Barlow of Fairfield, Vermont

In Bradley Barlow's lifetime he made and lost fortunes, helped tame the western United States, had an active political life that included a term as U.S. Congressman, and endured the tragedies of burying four of his daughters.

Bradley Barlow was born on May 12, 1814, at Fairfield, Franklin County, Vermont, and was a son of Bradley and Deborah (Sherman) Barlow. He was a seventh generation descendant of the immigrant John Barlow of Fairfield, Fairfield County, Connecticut (Bradley⁷, Bradley⁶, David⁵, David⁴, Samuel³, John², John¹). He died on November 6, 1889, while visiting his daughter Laura at Denver, Colorado, and was returned home to be buried in the Greenwood Cemetery at St. Albans, Franklin County, Vermont.



He was educated in the public schools of Fairfield and there is no record of him going beyond high school. Following his schooling he worked for a term as a clerk in a store in Philadelphia, Pennsylvania, but when his father died in 1836 he returned home to take over the family store at Fairfield.

In the autumn of 1857 he moved to St. Albans to become cashier of the St. Albans State Bank. When the national banking system was established, the state banks went out of existence, and he became cashier of the Vermont National Bank at St. Albans. He also became extensively engaged in other businesses at this time and prospered. By 1874 he had acquired a majority of the bank's stock and

(continued on next page)

Bradley Barlow (continued)

was consequently chosen president. He remained president until the bank closed in 1883.

Bradley Barlow and Jared L. Sanderson had been friends for some time before entering into a partnership to run stagelines west of the Mississippi in 1860. Although they first confined their operations to Missouri and Kansas, Barlow and Sanderson soon expanded, extending lines into Denver by 1865 and Santa Fe by 1866. With Barlow in Vermont negotiating mail contracts with the Post Office Department and Sanderson running the stage operation in the West, the company flourished. When silver was discovered in the San Juans in the 1870's, Barlow and Sanderson extended their stageline into south-central Colorado.

By the late 1870's, Barlow and Sanderson had a network of stage lines running all over Colorado. The company had branch lines into Pueblo, Colorado Springs, and Canon City, and when word came of rich strikes in Leadville and the San Juans, additional stages were sent deep into the mountains. By 1880, Barlow and Sanderson had 5000 mules and horses in constant use on stagecoach runs throughout Colorado and northern New Mexico. They employed over 1000 men and grossed over \$1 million a year. When Barlow sold out his interest to his partner around 1880 he retired with a comfortable fortune.

The coming of the railroad marked the end of the Barlow and Sanderson stagelines. On August 22, 1882, the last Barlow and Sanderson stage left Gunnison, Colorado, never to return. A few companies continued to run stages in the more isolated sectors of the area where the railroads did not reach, but the great days were over. The record is unclear as to when Sanderson retired from staging in the West, but it was around 1885. He was a very old man when

he died at Boulder, Colorado, in 1915.

Early in 1879 Bradley Barlow became interested in the Southeastern Railway Company of Canada and Northern Vermont. Colonel A. B. Foster, the chief promoter of the enterprise, died suddenly and his sons, one of whom had married a Barlow daughter, stood in need of powerful assistance to extract their father's estate from ruin and the railroad from failure. Barlow stepped in and purchased one interest after another until he became the substantial owner. Finding the work congenial and the prospects encouraging, he entered upon the most thorough improvements of the road and its equipment, and acquired by the purchase of securities, by lease and by contract of a system embracing 300 miles of railway and forming connections between the Atlantic seaboard, Montreal, and the Canadian northwest of inestimable future value.

Meanwhile the project for a coast to coast railway in Canada, liberally subsidized by the Canadian government, had passed under control of a syndicate of Canadian, American and English capitalists who were not slow to perceive the value of a connection with New England such as the Southeastern system afforded, and who in 1882 entered into a conditional or optional contract with Barlow for the purchase of his roads or a controlling interest therein. In the fullest confidence of their purpose to carry out this arrangement he went forward with pending and projected improvements until about the first of August 1883 he found himself confronted with pressing liabilities on the one hand and with their refusal to meet his expectations on the other. Ruin stared him in the face. There was not time for discovering and resorting to other expedients. His paper went to protest and in a short time the largest creditor who, by reason of the contract to purchase, had made
(continued on next page)

Bradley Barlow (continued)

advancements, acquired practical control of the splendid enterprise which he had developed, without further expense and through the cooperation of his own trusted associates and agents. This, of course, involved his bank at St. Albans. Calling its directors together, he stated the situation and with characteristic unselfishness turned over to the bank, for the benefit of its creditors, every dollars worth of property that he possessed in the U.S.

Bradley Barlow was an active Democrat up to the outbreak of the Civil War in 1862 when he changed his allegiance and became a Republican. He held many political positions in both Fairfield and St. Albans, including chairman of the selectmen in Fairfield and St. Albans, chairman of the school committee in St. Albans, president of the village corporation, and treasurer of Franklin County from 1860 to 1867. He represented Fairfield in the Vermont Legislature in 1845, '50, '51, and '52, and St. Albans in 1864 and '65. He was elected to the Vermont Senate in 1866 and '68, and he was a delegate to the Constitutional Conventions of 1843, '50, and '57.

In 1878 he was ambitious to go to Congress, but Gen. W. W. Grout received the nomination; a bolt was organized, and a convention held to endorse the nomination which had been given him by the Greenbackers, the bulk of the Democrats aiding in his support. Grout's election was defeated at the first trial, and Barlow was



Bradley Barlow

easily elected at the second, serving only one term [Biographical Encyclopaedia of Vermont of The Nineteenth Century, Metropolitan Publishing and Engraving Company, Boston, 1885].

Bradley Barlow was raised an Episcopalian and his family had been members of the Trinity Church at Fairfield. But he sent his daughters to be educated at the Convent of the Congregation of Notre Dame in Montreal and they became Roman Catholics. A small book,

"The Young Converts; or Memoirs of the Three Sisters, Debbie, Helen and Anna Barlow," was compiled by Julia C. Smalley and published in 1861. As described in the preface, it is "a little sketch of the edifying lives of the three sisters...."

Bradley Barlow married Caroline Farnsworth in 1837, probably at Fairfield, Vermont. She was born on May 20, 1819, at Fairfield and was a daughter of James and Sarah (Woodward) Farnsworth of Fairfield. Their children were born at Fairfield:

i. Deborah S. Barlow, "Dolly", was born in 1838 according to her record in the 1850 census. She did not marry. She died on April 9, 1860, at St. Albans [Vermont Vital Records] and was buried there in the St. Albans Cemetery.

ii. Helen K. Barlow was born in 1840 according to her record in the 1850 census. She did not marry. She died on October 29, (continued on next page)

Bradley Barlow (continued)

1858, at St. Albans [Vermont Vital Records] and was recorded as being buried there in the Greenwood Cemetery.

iii. Joanna F. Barlow, "Anna", was born in 1841 according to her record in the 1850 census. She did not marry. She died on March 11, 1860, at St. Albans [Vermont Vital Records].

iv. Laura S. Barlow was born in 1844-5 according to her record in the 1850 and 1860 censuses. She married Frederick

A. Metcalf and they moved to Denver, Colorado.

v. Charlotte H. Barlow was born in 1844-5 according to her record in the 1850 and 1860 censuses. She married W. H. Foster and their child Carrie married Thomas Hanley.

vi. Anna M. Barlow was born in 1847 according to her record in the 1850 census. She died on March 11, 1865, at St. Albans, at age 18, and was buried there in the Greenwood Cemetery.

Elisha Clapp Barlow of Dutchess County, New York

First Generation

1. Elisha Clapp Barlow was born in 1784 and was a son of ---- Barlow and Susanna Baldwin. He died on May 27, 1841, at age 57 at LaGrange, Dutchess County, New York, and was buried in the Presbyterian Church Cemetery at Freedom Plains in Dutchess County.

Elisha Clapp Barlow was recorded at Beekman, Dutchess County, in the 1810 and 1820 censuses, and at LaGrange in the 1830 and 1840 censuses. He was assessed \$7300 for 283 acres at Freedom, Dutchess County, in 1827. His mother, Susanna (Baldwin) Barlow, was a daughter of Isaac and Susanna Baldwin. After Elisha's father's death she married second Jesse I. Clapp, who was born in 1752 and died in 1828. Jesse Clapp's will was dated April 29, 1826, was proved on November 13, 1828, and mentioned Elisha Clapp Barlow, son of "my first wife Susan Clapp," and grandson Isaac

Clapp Barlow. Susanna died on November 7, 1818, at Beekman.

Elisha Clapp Barlow is believed to have married first Phebe Merritt on December 29, 1804, at Pleasant Valley, Dutchess County [IGI]. She was born on March 23, 1786, and was a daughter of Abraham and Sarah (Brundage) Merritt of Beekman. Their child was probably:

i. Maria Jane Barlow married Benjamin H. Mitchell, a son of Samuel T. and Phebe (Jackson) Mitchell, on August 12, 1826 [*10000 Vital Records of Eastern New York*]. Their children (surname Mitchell) were Phebe Eliza, Susan Ann, Samuel, Emma, Jackson, Cordelia, Barlow and Thomas.

(continued on next page)

Elisha Clapp Barlow (continued)

Elisha Clapp Barlow married (probably second) Charlotte ----. She was born around January 23, 1789, in New York [gravestone, 1850 census]. She died on May 23, 1866, at age 77 years 4 months, and was buried in the Presbyterian Church Cemetery at Freedom Plains. She was recorded at LaGrange in the 1850 and 1860 censuses. Their children were born at LaGrange:

2. ii. Elias L. Barlow was born around January 23, 1817 [gravestone].

iii. Caroline C. Barlow was born in 1819 [1850 & 1860 censuses]. She was recorded with her mother at LaGrange in the 1850 and 1860 censuses. She did not marry. She died in 1899 and was buried in the Presbyterian Church Cemetery at Freedom Plains.

3. iv. Isaac Clapp Barlow was born around 1820.

v. Phebe M. Barlow was born in 1821. She was recorded with her mother at LaGrange in the 1850 and 1860 censuses. She did not marry. She died in 1900 and was buried in the Presbyterian Church Cemetery at Freedom Plains.

4. vi. Edwin Barlow was born on June 16, 1823.

vii. Hattie Barlow was born in 1825. She married Henry B. Noxon in 1847. He was born in 1825 at Union Vale, Dutchess County, and was a farmer there.

viii. Sarah Barlow was born around December 29, 1827 [gravestone]. She was recorded with her mother at LaGrange in the 1850 census. She did not marry. She died on March 29, 1860, at age 32 years 4 months, and was buried in the Presbyterian Church Cemetery at Freedom Plains.

5. ix. Charles P. Barlow was born around January 10, 1831 [gravestone].

x. Mary W. Barlow was born on June 22, 1836. She was recorded with her mother at LaGrange in the 1850 and 1860 censuses. She did not marry. She died on June 18, 1888, and was buried in the Presbyterian Church Cemetery at Freedom Plains.

Second Generation

2. Elias L. Barlow was born around January 23, 1817 [gravestone], at LaGrange, Dutchess County, New York, and was a son of 1. Elisha C. and Charlotte Barlow. He died on July 23, 1870, at age 53 years 6 months, and was buried in Presbyterian Church Cemetery at Freedom Plains, Dutchess County.

Elias L. Barlow was recorded as a farmer and living with his mother at LaGrange in the 1850 census. He was probably the Elias L. Barlow recorded as a liquor importer and living with the Palmer family at New York City in the 1860 census. In the 1854 through 1859 New York City Directories his place of business was given as 11th Avenue near West 51st Street, and his home address was 58 King Street.

3. Isaac Clapp Barlow was born around 1820 at LaGrange, Dutchess County, New York, and was a son of 1. Elisha C. and Charlotte Barlow.

Isaac Clapp Barlow married Maria Cornelia ----. She was born on January 2, 1825. She died on February 21, 1843, and was buried in the Reformed Church Cemetery at Wappingers Falls, Dutchess County.

(continued on next page)

Elisha Clapp Barlow (continued)

4. **Edwin Barlow** was born on June 16, 1823, at LaGrange, Dutchess County, New York, and was a son of 1. Elisha C. and Charlotte Barlow. He was recorded living with his mother at LaGrange in the 1850 census and as a farmer with his own family at LaGrange in the 1860 census. He died on July 20, 1883, and was buried in the Presbyterian Church Cemetery at Freedom Plains.

Edwin Barlow married first Catherine A. ----. She was born in March 1828. She died on June 2, 1861, at age 33 years 3 months and was buried in the Presbyterian Church Cemetery. Their daughter was:

i. Frances Barlow was born in 1852 probably at LaGrange [1860 census].

Edwin Barlow married second Mrs. Anna C. Robinson of Fishkill, Dutchess County, on November 9, 1871, in the Dutch Reformed Church at New Hackensack, Dutchess County.

5. **Charles P. Barlow** was born around January 10, 1831 [gravestone], at LaGrange, Dutchess County, New York, and was a son of 1. Elisha C. and Charlotte Barlow. He was recorded living with his mother at LaGrange in the 1850 and 1860 censuses. He died on October 10, 1868, at age 37 years 10 months, and was buried in the Presbyterian Church Cemetery at Freedom Plains, Dutchess County.

Charles P. Barlow enlisted in the Civil War on September 2, 1862, at Dover, Dutchess County, for 3 years. He served as a Private in Company E of the 150th New York Infantry Regiment, the "Dutchess County Regiment", which was organized on October 10, 1862, at Poughkeepsie, Dutchess County. He was promoted to Corporal on September 23, 1862; promoted to Sergeant on October 11, 1862; promoted to First Sergeant on January 1, 1863; and commissioned Second Lieutenant on January 16, 1864, with rank from December 18, 1863. He was wounded in action on July 20, 1864, at Atlanta, Georgia. He was mustered out with his company on June 8, 1865, near Washington, D.C.

Arunah Roseter Barlow of Vermont, New York and Illinois

First Generation

1. **Arunah Roseter Barlow** was born on December 4, 1807, at Hubbardton, Rutland County, Vermont [Family Bible]. He was probably a son of Nathan and Philota (Pratt) Barlow, who were recorded at Fair Haven, Vermont, in the 1790 census, at Benson, Vermont, in the 1800 census, and a

Hubbardton in the 1810 census. They had a son born between 1800 and 1810 who is not otherwise recorded. James and Hepsibah (Townsend) Barlow were also recorded at Benson in the 1800 census and at Hubbardton in the 1810 census with a son
(continued on next page)

Arunah Roseter Barlow (continued)

born between 1800 and 1810, but it is known that their son was James Truman Barlow born on January 28, 1806.

Arunah Roseter Barlow was an Erie Canal boat captain. He was recorded at West Haven, Rutland County, Vermont, in the 1830 census, and at Rochester, Monroe County, New York, in the 1840 census. He was probably the A. R. Barlow, retired, who lived at Milan, Black Hawk Township, Rock Island County, Illinois, in 1877 [*Biographical Directory of Rock Island County Illinois, 1877*].

Arunah Roseter Barlow married Mary A. ----. She was born on May 19, 1817, at West Haven, Vermont [Family Bible]. She died on July 8, 1841, at Rochester, New York [Family Bible]. Their children were:

2. i. Lewis Barlow was born on November 22, 1826, at Whitehall, Washington County, New York [Family Bible].

3. ii. Henry C. Barlow was born on July 26, 1832, at Oriskany, Oneida County, New York [Family Bible].

iii. Harriet N. Barlow was born on May 18, 1834, at Rochester, New York [Family Bible]. She married Henry R. Tillman and their children were: Albert Otis Tillman, Ida Cornelia L. Tillman and Edmond Arunah Tillman.

4. iv. Otis Barlow was born on April 18, 1836, at Murray, Orleans County, New York.

v. Eliza A. Barlow was born on October 6, 1838, at Knowlesville, Orleans County, New York. She died on October 18, 1915, at Lawrenceville, Tioga County, Pennsylvania. She married Matthew Riffle on January 18, 1856, at Addison, Steuben

County, New York. He was born on November 8, 1832. He died on May 27, 1899, at Corning, Steuben County, New York. Their children were: Estella T. Riffle, Lewis Augustus Riffle and Margaret J. Riffle.

Arunah Roseter Barlow married second Mary ----. She died on October 12, 1874, at Camden, Oneida County, New York.

Second Generation

2. **Lewis Barlow** was born on November 22, 1826, at Whitehall, Washington County, New York [Family Bible]. He was probably the Lewis Barlow recorded living with the William McClellon family at Jackson, Washington County, New York, in the 1850 census.

3. **Henry C. Barlow** was born on July 26, 1832, at Oriskany, Oneida County, New York [Family Bible]. His children were:

i. Mary Lidia Barlow was born on February 28, 1857 [Family Bible].

ii. Henry C. Barlow was born on June 16, 1859 [Family Bible].

iii. Edward C. Barlow was born on August 15, 1861 [Family Bible].

4. **Otis Barlow** was born on April 18, 1836, at Murray, Orleans County, New York. His children were:

i. Lucy Jane Barlow was born on February 18, 1860 [Family Bible].

ii. Ella P. Barlow was born on January 15, 1862 [Family Bible].

George Barlow of Reading, Pennsylvania

First Generation

1. **George Barlow** was a native of Ireland and spent his life there as a farmer. He died about 1862 at age 75. He married Bedelia Lilly and their children were born in Ireland:

- i. Mary Barlow remained in Ireland.
 - ii. James Barlow came to America about 1845.
 - iii. William Barlow came to America about 1847-50.
 - iv. Jane Barlow came to America after 1850 with her sister Ella.
 - v. Ann Barlow remained in Ireland.
2. vi. George Barlow was born on March 5, 1840.
- vii. Ella Barlow came to America after 1850 with her sister Jane.

Second Generation

2. **George Barlow** was born on March 5, 1840, in Ireland and was a son of 1. George and Bedelia (Lilly) Barlow. He came to America in 1852 and settled first in Greene County, New York, where he learned the hatting trade. In 1856 he moved to Reading, Berks County, Pennsylvania, where he spent the rest of his life.

George Barlow was employed as a superintendent at the William H. Rheinold & Company hat factory for eighteen years. When Rheinold suspended business, he became superintendent of John R. Hendel's

hat factory which soon moved from Montello to Reading.

George Barlow married Ellen McDonnell on December 31, 1862, probably at Reading, Pennsylvania. She was a daughter of James and Mary (Murphy) McDonnell. James McDonnell was born in Ireland, came to America and was a carpenter in New York state. George and Ellen Barlow's children were:

- i. James F. Barlow was a skilled mechanic employed by the Mohn Brothers, Reading.
- ii. Mary J. Barlow.
- iii. George F. Barlow was a clerk at the Reading Iron Company.
- iv. Lillian F. Barlow.
- v. William L. Barlow was employed by the Reading Iron Company.

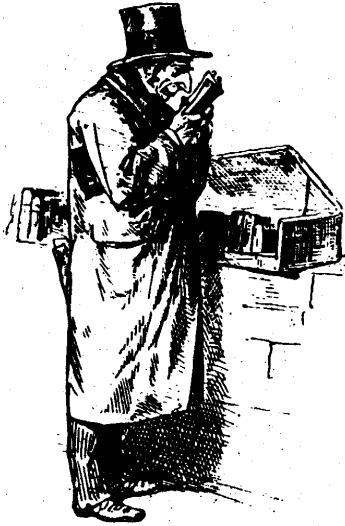
An item from *The New York Times*, Sunday, November 2, 1997, page 33, "Metropolitan Diary" by Ron Alexander, and too good not to repeat here:

An older friend, recently returned from her home town in North Carolina, says they've spruced up the churchyard cemetery since her last visit several years back. "Lots of new greenery," she said. "And families are together now." "Together?" I asked, puzzled.

"Well, years ago they never much worried where they buried someone because everyone was a neighbor anyhow. They'd just dig a grave wherever it seemed to balance things. But they've redone it so people are with their children and grandchildren, instead of scattered." "You mean they exhumed all those people and reburied them?" I asked.

"Oh no," she said. "They just shifted the headstones. Everyone agrees it looks ever so much nicer."

Books About Barlows



Three new books about Barlows are now available and ready to be shipped.

The first book is the long-awaited reprint of *Barlow and Allied Families* by Laura Campbell Hawkins and Emma Campbell DeVries. This very rare book, originally published in 1930 and never reprinted, covers many of the descendants of the infamous George Barlow (c. 1620 - 1684) of Sandwich, Massachusetts, and includes a large amount of historical information on this family in New England and on George's presumed ancestry in England.

So far as can be determined, only seven original copies of this book exist and they are held by the Library of Congress, the Newberry Library, the Connecticut State Library, the New York (City) Public Library, the Minnesota Historical Society, the Kansas City Public Library and the Historical Society of Pennsylvania. The book has been microfilmed and many libraries have these copies. Because the original is so rare and has not been available to photocopy, this book has been reproduced from a microfilm copy and transcribed to a computer using a scanner and optical character recognition software.

Both the original and the reprint are 8½" x 11", 3 leaves, 217+ pages and fully indexed. Two versions of the reprint are offered: a soft-cover non-archival version for \$44.50 and a hard-cover archival (acid-free) version for \$49.50; both postpaid to U.S. addresses.

The second book is an index to the Barlows (and Berlows, Burlews, etc.) recorded in the 1790 through 1860 censuses. This *Index to Barlows in the 1790-1860 Census Records* is 8½" x 11", 134 pages, soft-cover and is available for \$19.50 postpaid to U.S. addresses.

The third book is a companion book to the census index and contains transcriptions of all the Barlows recorded in the 1790 through 1860 federal censuses. This *Transcriptions of Barlows in the 1790-1860 Census Records* is 8½" x 11", 267 pages, soft-cover and is available for \$39.50 postpaid to U.S. addresses.

Sample pages from each of these books are shown on the next three pages of this newsletter. These samples will give you a very good idea of what these books contain and how the information is presented.

These books are in stock and are available for immediate shipment. Orders for any of these books may be placed by sending a check to Edson L. Barlow, 840 East Gunn Road, Rochester, MI 48306-1905.

BARLOWS IN ENGLAND.

The following pedigree of the Barlow Family is in the possession (1739,) of John Barlow, Esquire, of Slebatch, or Slebech, Pembrokeshire. It is found in Paver's "Collection Of The Pedigrees Of Yorkshire." in Thoresby's "Decatus Leodiensis," and "Clerical Fragments," also.

This is a family of great antiquity, and many of them enjoyed the honor of knighthood in former times. The pedigree runs as follows:

- 1-Sir Thomas Barlow, (or Barlo) of Barlow, Knight,)
married -----)son,
- 2-James Barlow, of Barlow, was Commissioner of Lanca-)
shire, and married the daughter of Sir Robert Wors-)
ley, Knight,)son,
- 3-Sir Richard Barlow, Knight, married the daughter of)
Thomas Antwisle, Esquire,)son,
- 4-Sir Robert Barlow, Knight, married Ursula, daughter)
of Sir John Berron, Knight,)son,
- 5-Sir Christopher Barlow, Knight, married Margaret,)
daughter of Robert Gamble, Esquire,)son,
- 6-Henry Barlow, Esquire, married Anne, daughter of Sir)
Rowland Sherwood, Knight,)son,
- 7-Richard Barlow, Esquire, married the daughter of Sir)
John Towneley, Knight,)son,
- 8-John Barlow, Esquire, married Mary Anne, (or Maryan,))
daughter of Sir Thomas Sherburn, Knight,)son,
- 9-Sir Thomas Barlow, Knight, married Anne, daughter)
of Sir William Stranwidge, Knight,)son,
- 10-Sir John Barlow, Knight, of Barlow, married Anne,)
daughter of Sir Ralph Langford, Knight,)son,
- 11-Sir Thomas Barlow, married -----)son,
- 12-Thomas Barlow, second son of Sir Thomas, married)
Margaret, daughter of John Trussel, Esquire,)son,
- 13-John Barlow, Esquire, married Christian, daughter of)
Edward Barley, of Barley, Commissioner of Hertford,)son,
- 14-William Barlow, Bishop, married Agatha, daughter of)
Robert Wellesborne, Esquire,)son,
- 15-William Barlow, Bishop, married -----)son,
- 16-George Barlow, who emigrated to America.

According to Savage, George Barlow, son of Bishop William Barlow, was the first of this line in America, and was in Saco, Maine, in 1653. His history will be found with the American line.

A sample page from *Index to Barlows in the 1790-1860 Census Records*

Name	Birth	1790 res.	1800 res.	1810 res.	1820 res.	1830 res.	1840 res.	1850 res.	1860 res.
Aaron	1805	OH	Gallia OH	.	Kanawh VA
Aaron	1813	NY	Delawa NY
Aaron	1820	RI	Frankl OH
Aaron	1825	PA	Wayne PA
Aaron Burr	1831	NY	Delawa NY
Aaron [Joel Aaro]	1839	CT	Fairfi CT
Aaron [Berlow]	1842	PA	Miffli PA
Aaron [Berlow]	1842	PA	Miffli PA
Aaron Burr	1843	NY	Delawa NY
Aaron Burr	1844	NY	Delawa NY
Abbey	1829	VT	Frankl VT
Abbie	1856	NY	St Law NY
Abby H.	1825	RI	New Ha NC
Abby D.	1836	MA	Dukes MA
Abby E.	1857	ME	Waldo ME
Abel	1775	CT	.	Litchf CT	.	Greene NY	.	.	.
Abel S.	1805	VT	Adams MS	.	.
Abel	1832	VT	Frankl VT
Abel James	1840	NY	Delawa NY
Abel M.	1844	NY	Chenan NY
Abel	1853	PA	Warren PA
Abigail	1784	CT	Delawa NY
Abigail	1804	PA	Lewis MO
Abigail [Barlon]	1814	ME	Oxford ME
Abigail	1815	RI	Wayne MI
Abigail	1821	NC	Henry IN
Abigail Fuller	1821	MA	Berksh MA
Abigail "Abegal"	1821	NC	Wayne IN
Abigail Mary	1832	NY	Delawa NY
Abigail Eliza	1833	NY	Oswego NY
Abigail	1851	AL	Conecu AL
Abigail J.	1853	UT	Salt L UT
Abijah	1785c	Steube NY	.	.	.
Abijah [Burlew]	1796	NJ	Allegh NY
Abijah	1805c	Greene NY	.	.
Abijah	1806	NY	Oswego NY
Abner	1752	MA	Ontari NY	Ontari NY	Ontari NY	Ontari NY	Ontari NY	Ontari NY	Ontari NY
Abner	1757	CT	.	Graft NH	Herkim NY	.	Chauta NY	.	.
Abner	1785c	Montgo PA	.	.
Abner Jr.	1794	NY	.	.	.	Ontari NY	.	Ontari NY	Ontari NY
Abner	1800	NH	Chauta NY	Racine WI	Dane WI
Abner [Burlew]	1831	NJ	Seneca NY
Abner	1836	NY	Ingham MI
Abner	1845	AL	Conecu AL
Abner Franklin	1847	MA	Barnst MA
Abner	1849	PA	Montgo PA
Abner	1855	WI	GreenL WI
Abraham I.[Burlew]	Middle NJ	.	.
Abraham [Berloo]	1776b	Broome NY	.	.	.
Abraham	1785c	Isle o VA	.	.
Abraham	1805c	Bourbo KY	.
Abraham [Burlew]	1805c	Elbert GA	.
Abraham	1815c	Knox OH	.
Abraham	1830	New Yo NY
Abraham	1832	OH	Jeffer IL
Abraham	1832	TN	Ashe NC
Abraham	1840	Ge	Coshoc OH
Abraham [Burlew]	1849	NJ	Middle NJ
Abraham	1855	PA	Montgo PA
Abram	1755c	Broome NY	.	.

A sample page from *Transcriptions of Barlows in the 1790-1860 Census Records*

Dutchess County, New York, 1840 Census

278 0 0	37	Fishkill	John Barlow	1 0 0 0 0 1 0 0 0 0 0 0 0	2 0 0 0 1 0 0 0 0 0 0
0 0	209	Amenia	Elisha Barlow	0 1 0 1 0 0 0 1 0 0 0 0 0	2 0 2 1 0 0 1 0 1 0 0
0 0	209	Amenia	Jesse Barlow	0 0 0 2 0 0 1 0 0 0 0 0 0	0 0 1 0 0 0 1 0 0 0 0
0 0	209	Amenia	Obed Barlow	0 0 0 0 1 0 0 0 0 0 0 0 0	0 0 0 0 0 0 1 0 0 0 0
0 0	209	Amenia	Thomas Barlow	0 0 0 1 0 1 0 0 0 1 0 0 0	0 0 1 0 2 0 0 1 0 0 0
0 0	237	Stanford	Silas [Cyrus?] Barlow	0 1 0 0 1 2 0 0 0 0 0 0 0	0 1 1 1 0 1 0 0 0 0 0
0 0	249	Stanford	Bramen Barlow	0 0 0 0 0 0 0 0 1 0 0 0 0	0 0 0 0 0 0 0 0 1 0 0
0 0	249	Stanford	Miram[Myron] H. Barlow	0 0 0 0 0 1 0 0 0 0 0 0 0	1 0 0 0 1 0 0 0 0 0 0
0 0	271	LaGrange	Elisha C. Barlow	0 0 1 1 1 0 0 1 0 0 0 0 0	1 0 2 1 1 0 0 1 0 0 0

Franklin County, New York, 1840 Census

283 0 0	232	Constable	William Barlow	1 1 0 0 0 1 0 0 0 0 0 0 0	0 1 0 0 1 1 0 0 0 0 0
------------	-----	-----------	----------------	---------------------------	-----------------------

Fulton County, New York, 1840 Census

284 0 0	271	Oppenheim	Henry Barlow	1 1 0 2 0 0 2 0 0 0 0 0 0	0 0 1 1 0 0 1 0 0 0 0
------------	-----	-----------	--------------	---------------------------	-----------------------

Genesee County, New York, 1840 Census

285 0 0	68	China	Hiram Barlow [or Bartow]	1 1 0 0 0 1 0 0 0 0 0 0 0	2 0 0 1 1 0 0 0 0 0 0
0 0	321	Covington	Nathaniel Barlow	0 1 1 1 0 1 0 0 0 0 0 0 0	1 1 1 0 0 1 0 0 0 0 0
0 0	565	Bethany	Jonathan K. Barlow	1 0 1 0 0 0 0 1 0 0 0 0 0	0 2 1 1 0 0 1 0 0 0 0

Greene County, New York, 1840 Census

288 0 0	104	Durham	Walter Barlow	0 0 0 1 2 0 1 0 0 0 0 0 0	0 0 1 1 0 1 0 0 0 1 0
0 0	106	Durham	James Barlow	1 0 1 1 0 0 1 0 0 0 0 0 0	1 0 1 1 0 0 1 0 0 0 0
0 0	134	Windham	James Barlow	0 0 0 0 1 0 0 0 0 0 0 0 0	0 0 0 0 1 0 0 0 0 0 0
0 0	140	Windham	Alanson Barlow	0 0 0 1 0 0 1 0 0 0 0 0 0	0 0 1 1 0 1 0 0 0 0 0
0 0	142	Windham	Charity Barlow	0 1 1 2 1 0 0 0 0 0 0 0 0	1 0 0 0 0 1 1 0 0 0 0
0 0	144	Windham	Esther Barlow	0 1 0 0 1 0 0 0 0 0 0 0 0	0 0 1 0 0 0 0 0 1 0 0
0 0	144	Windham	George W. Barlow	1 1 1 0 0 1 0 0 0 0 0 0 0	0 0 0 0 0 1 0 0 0 0 0
0 0	194	Lexington	Allen Barlow	0 0 0 0 1 0 0 0 0 0 0 0 0	0 0 0 0 1 0 0 0 0 0 0
0 0	306	Catskill	Joel B. Barlow	0 0 0 0 1 1 0 0 1 0 0 0 0	1 0 1 0 1 0 0 0 0 0 0
0 0	338	Catskill	Benjamin Barlow	0 0 0 0 1 0 0 0 0 1 0 0 0	1 0 0 0 1 0 0 1 0 0 0

Jefferson County, New York, 1840 Census

291 0 0	6	LeRay	John W. Barlow	1 0 0 1 0 1 0 0 0 0 0 0 0	1 0 0 0 1 0 0 0 0 0 0
0 0	103	Lorraine	Orange Barlow	1 1 1 0 0 0 1 0 0 0 0 0 0	1 0 1 0 0 1 0 0 0 0 0
0 0	292	Watertown	Joseph Barlow	0 0 0 0 0 0 0 1 0 0 0 0 0	0 0 1 0 0 0 1 0 0 0 0